

# Askrigg Silent Art Auction



Raising money for Askrigg Church

1.

# Carol Tyler



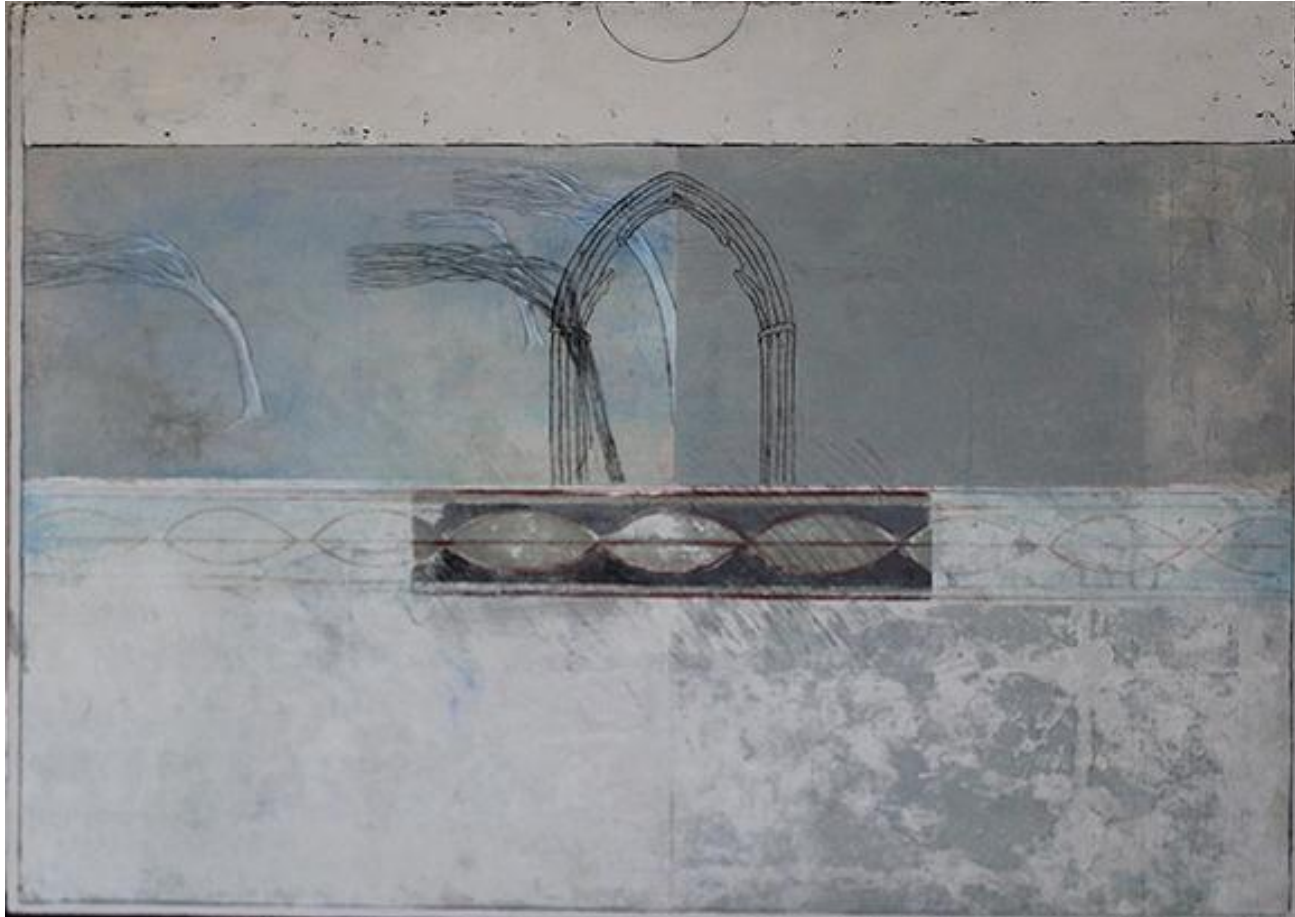
- Church with Stencils I (Danby Church)

- 20 x 24" OIL

Reserve  
£200

2.

## Carol Tyler



- A Ruin in Winter
- 24 x 30" OIL

Reserve  
£200



3.

# Carol Tyler



- Dissolution
- 24 x 30" OIL

Reserve  
£200

4.

# Carol Tyler



- Tracery and Traces
- 24 x 30" OIL

Reserve  
£200

5.

## Carol Tyler



- Snowfield
- 30.25 cm<sup>2</sup> OIL



6.

# Pierre Guillou



- Thorpe Arboretum  
30 x 39 cm OIL

Reserve  
£80

7.

## Diana Armfield RA



- Welsh sheep seen from the window  
23.5 x 19 cm LITHOGRAPH

Reserve  
£100



# 8

## Joyce Cheverton

From the collection of Sue Peckitt



- 'Near the Dovey, Wales'
- 23 x 30.5cm WATERCOLOUR

9.

# Andrea Hunter

(From the collection of Sue Peckitt)



- 'Hawthorn Tree'
- 24 cm<sup>2</sup> FELTWORK

Ciro Canzanella  
(From the collection of Sue Peckitt)

10.



- 'Summer Picnic'
- 23 x 29cm OIL



11.

# Mark Kaiser

(From the collection of Sue Peckitt)



- 'Oban'
- 29 cm<sup>2</sup>

This was made in a Kitz Island workshop  
(From the collection of Sue Peckitt)

12.



- 'Russian Icon'
- 14 x 19 cm

Reserve  
£100

13.

# Owen Bowen

(From the collection of Sue Peckitt)

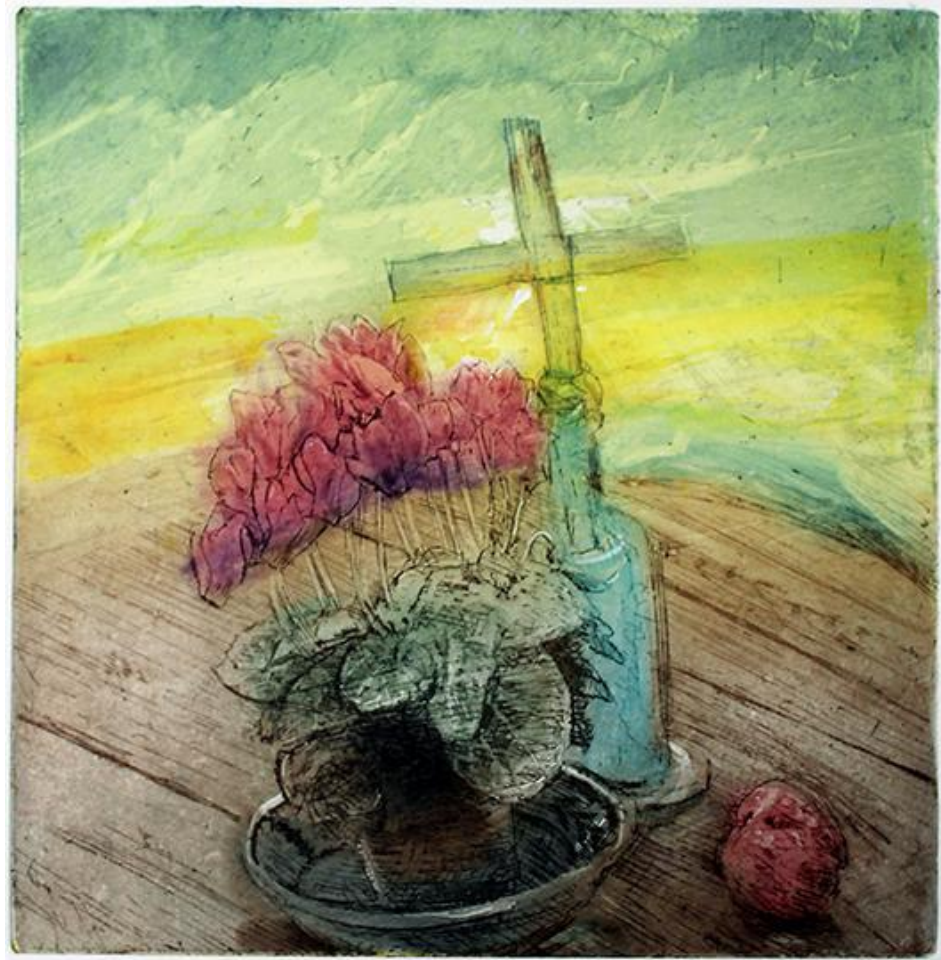


- 'unknown title'
- 22 x 17cm OIL



14.

## Piers Browne



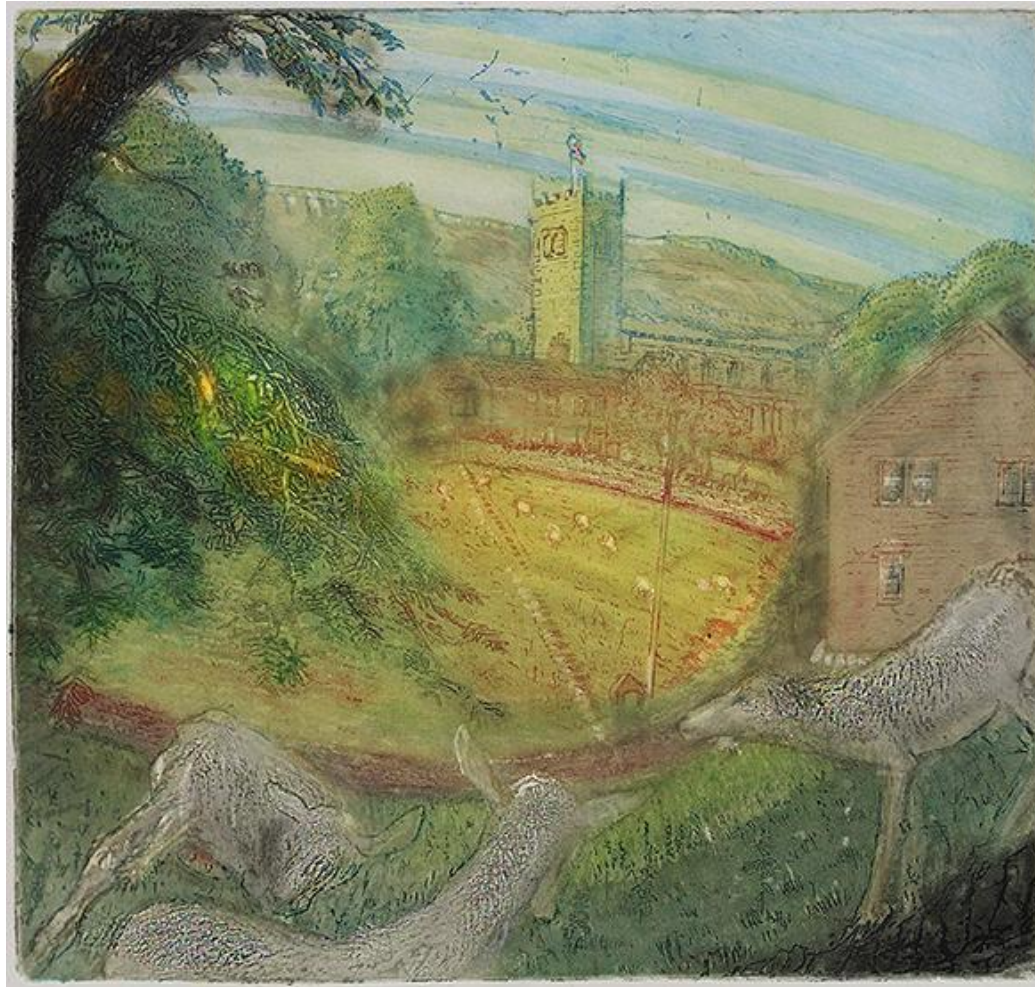
- Cyclamen, Palm and Wensleydale sunset

• 17 cm<sup>2</sup> ETCHING

Reserve  
£100

15.

## Piers Browne



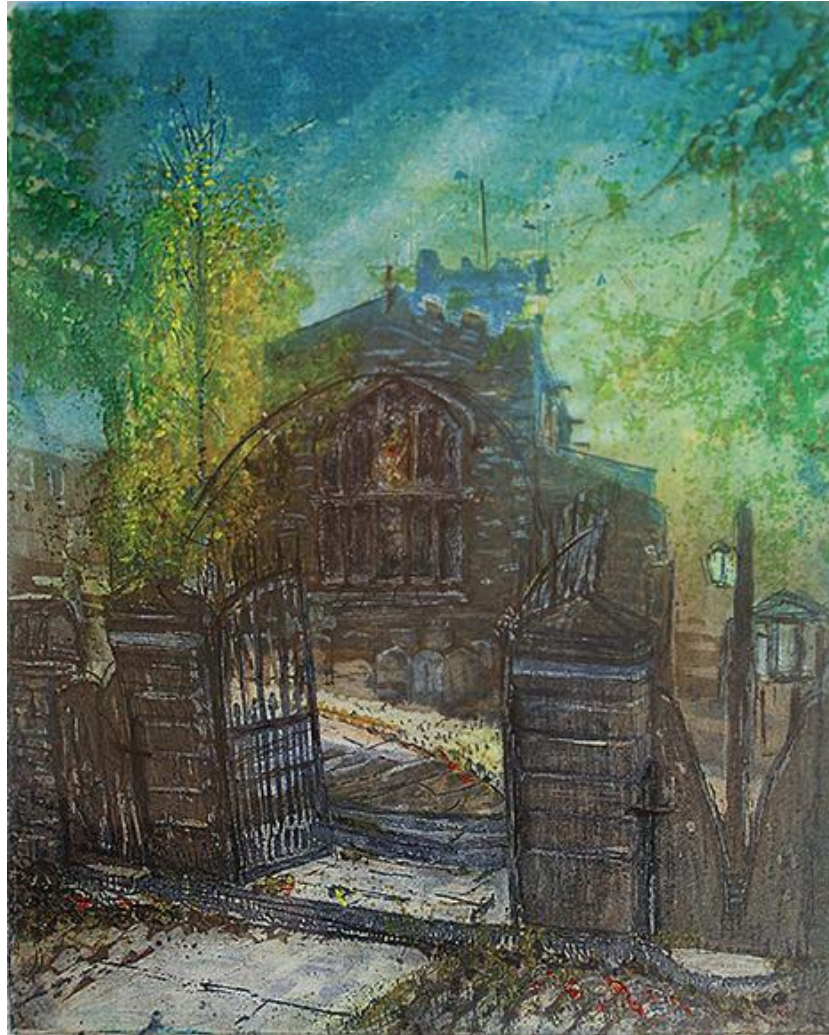
- Askrigg church with goats and sheep
- 32 x 33 cm ETCHING

Reserve  
£100



16.

## Piers Browne



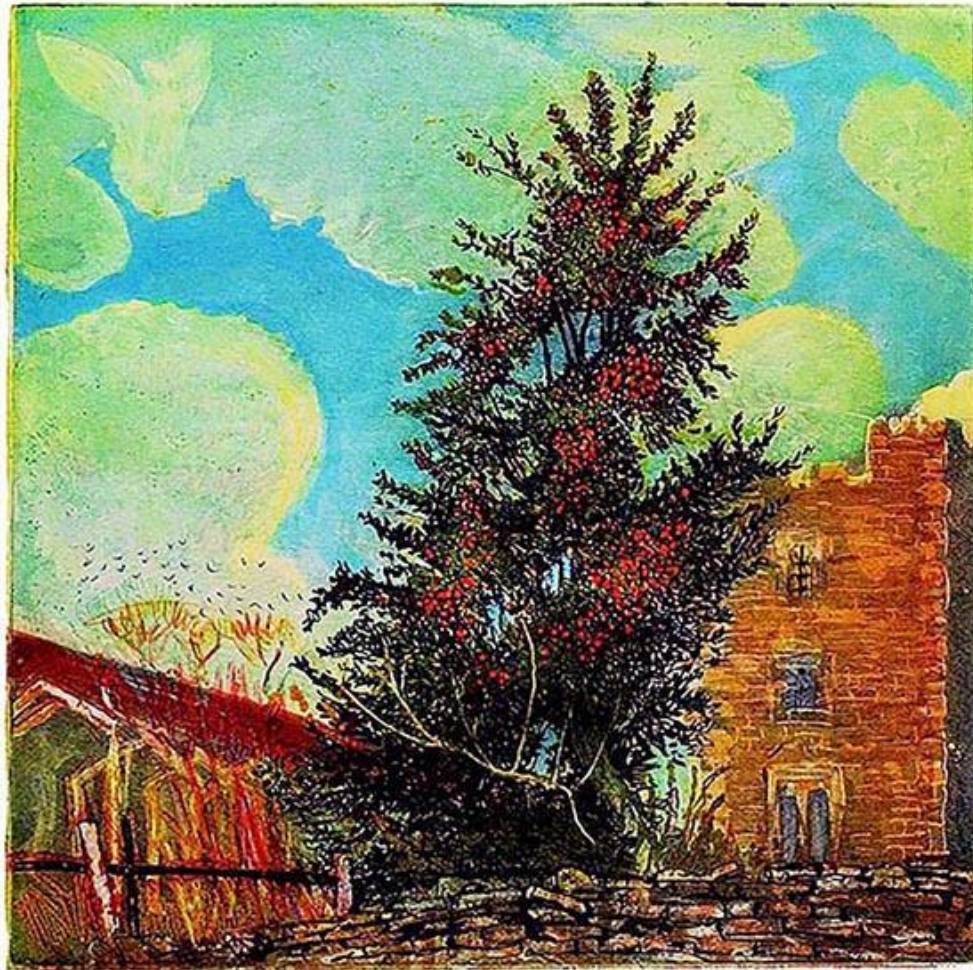
- St Oswald's Askrigg: Autumn leaves
- 25 x 20 cm ETCHING

Reserve  
£60



17.

## Piers Browne



- Holly at Nappa Scar
- 30 cm<sup>2</sup> ETCHING

Reserve  
£120

18.

## Piers Browne



. Ptarmigan at Summit of the Cairgorm, Autumn gale

32 x 33 cm OIL

Reserve  
£400



19.

## Piers Browne



Sea fret rolling in at Rockcliffe, Dumfries

43 x 54.4 cm OIL

Reserve  
£450



20.

Piers Browne



Central Java, fairly active volcanoes

17 x 34.5 cm OIL

21.

Piers Browne



Studley Royal Water Gardens

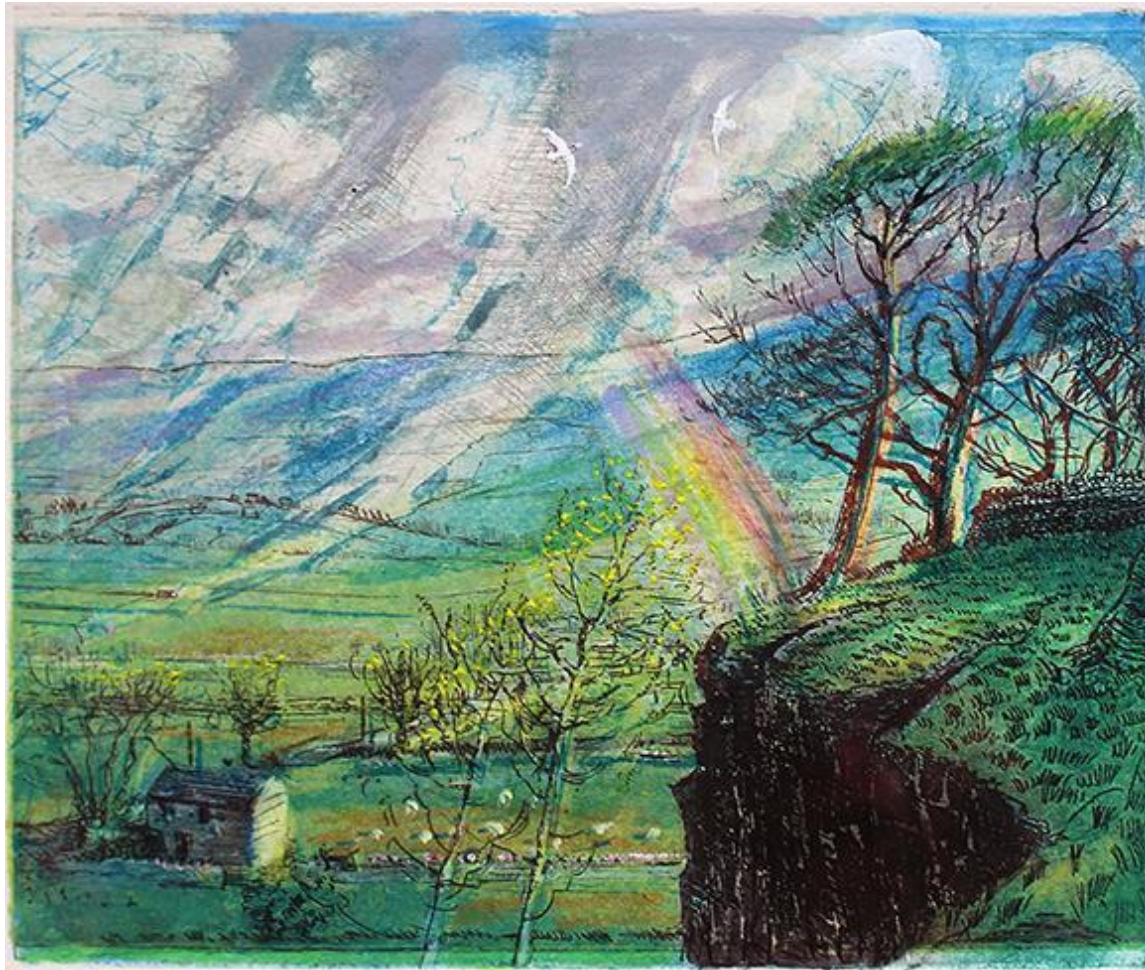
91.5 x 122 cm OIL

Reserve  
£1000



22.

## Piers Browne



Rainbow: Wensleydale from Cubeck

17.5 x 21 cm ETCHING

Reserve  
£100



23.

Piers Browne



Horse Chestnut, Spring at Nappa Hall, Wensleydale

39.5 x 25 cm ETCHING

Reserve  
£70

24.

Judi Allinson



Donated by Piers Browne

Bell Flowers, Swaledale

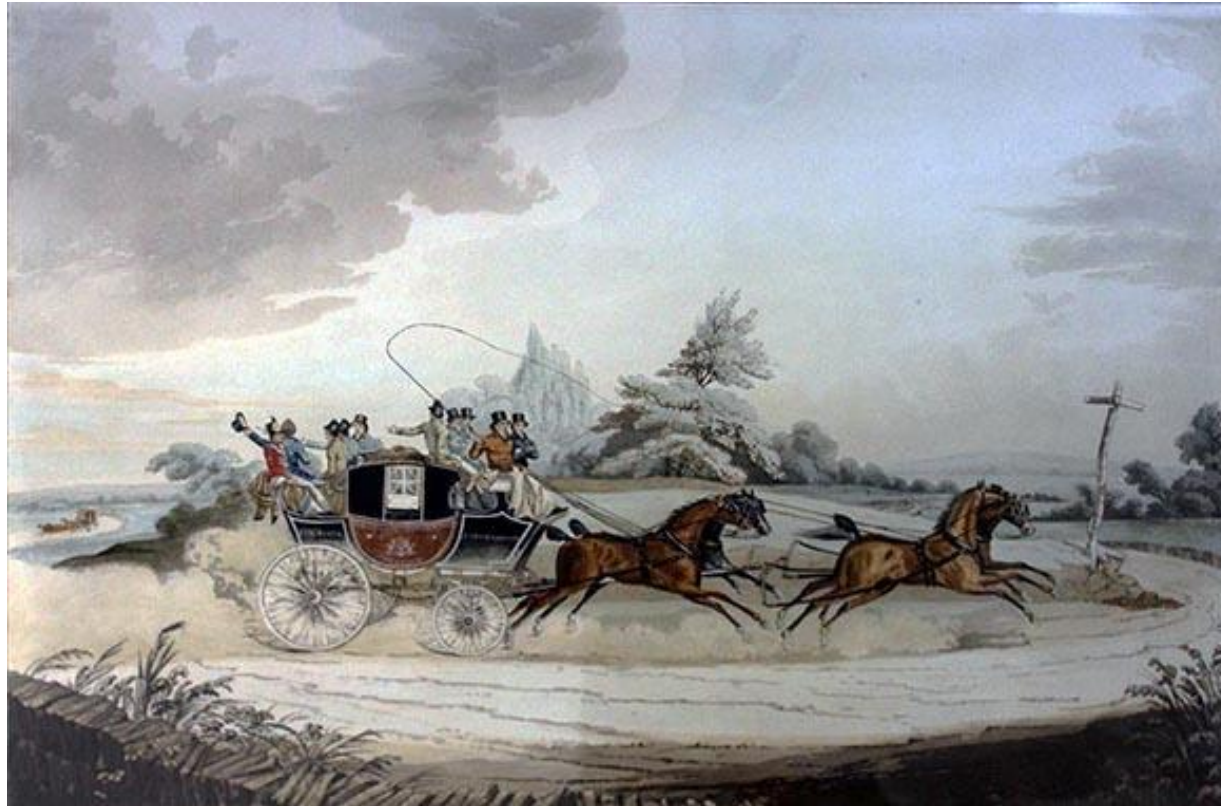
34 x 39cm OIL

Reserve  
£150



25.

## James Pollard



Donated by Piers Browne

'Stage Coach with opposition in sight'

31 x 43 cm AQUATINT

Reserve  
£200



26.

Deidre Borlase



Donated by Piers Browne

'Flags in St Marks Square, Venice'

28 x 36 cm Watercolour

27.

Andrea Hunter



Blue Steel Sea Holly  
70 x 70 cm FELT

Reserve  
£350



# 28. Stewart Huntington



Askrigg Church with snow falling  
25 x 35.5 cm WATERCOLOUR

Reserve  
£150



29.

Lynda Denny



Owl babies

22 x 32cm WATERCOLOUR

Reserve  
£150

30.

Lynda Denny



Scottish Farmhouse

21.5 x 31 cm WATERCOLOUR

Reserve  
£150



31.

# Marie Hartley



Donated by Jane Ritchie

'Semerwater in snowy winter'

49 x 74.5 cm OIL

Reserve  
£150



# 32. Norman Ackroyd RA CBE

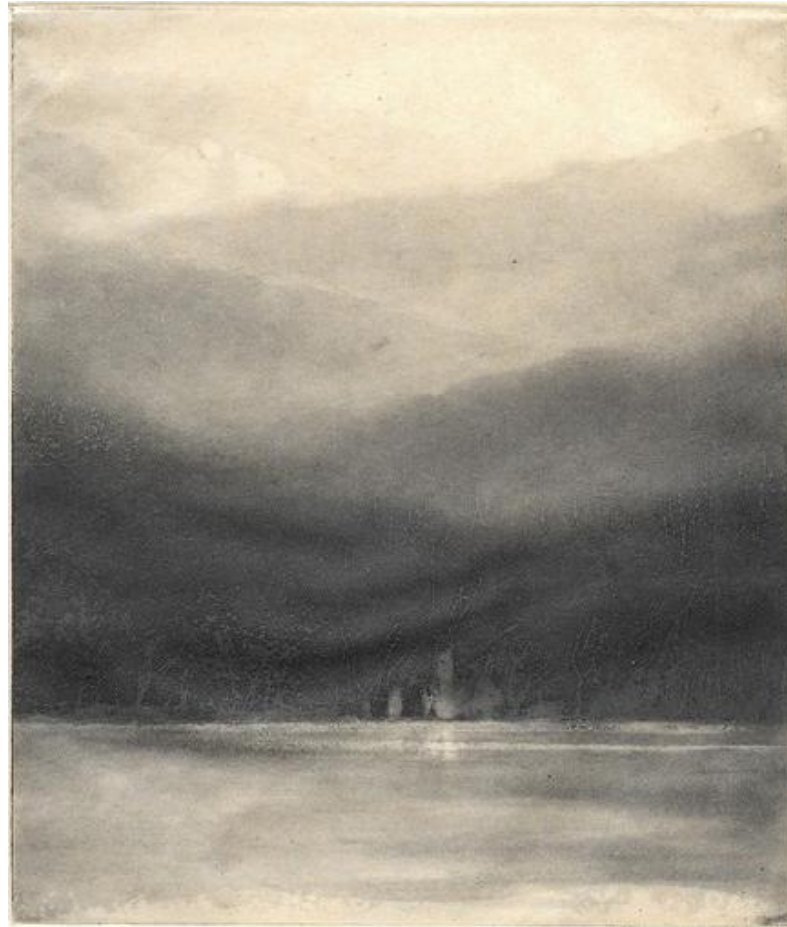


January in Wharfedale

15 x 22 cm ETCHING

Reserve  
£324

# 33. Norman Ackroyd RA CBE



Coniston, Ruskin's House

18 x 15 cm ETCHING

Reserve  
£324



# 34. Norman Ackroyd RA CBE



Sandsend under Mulgrave

16 x 28.5 cm ETCHING

Reserve  
£324

# 35. Norman Ackroyd RA CBE



Bempton Cliffs

15.5 x 28.5 cm ETCHING

Reserve  
£324



36.

Charlotte Mudd



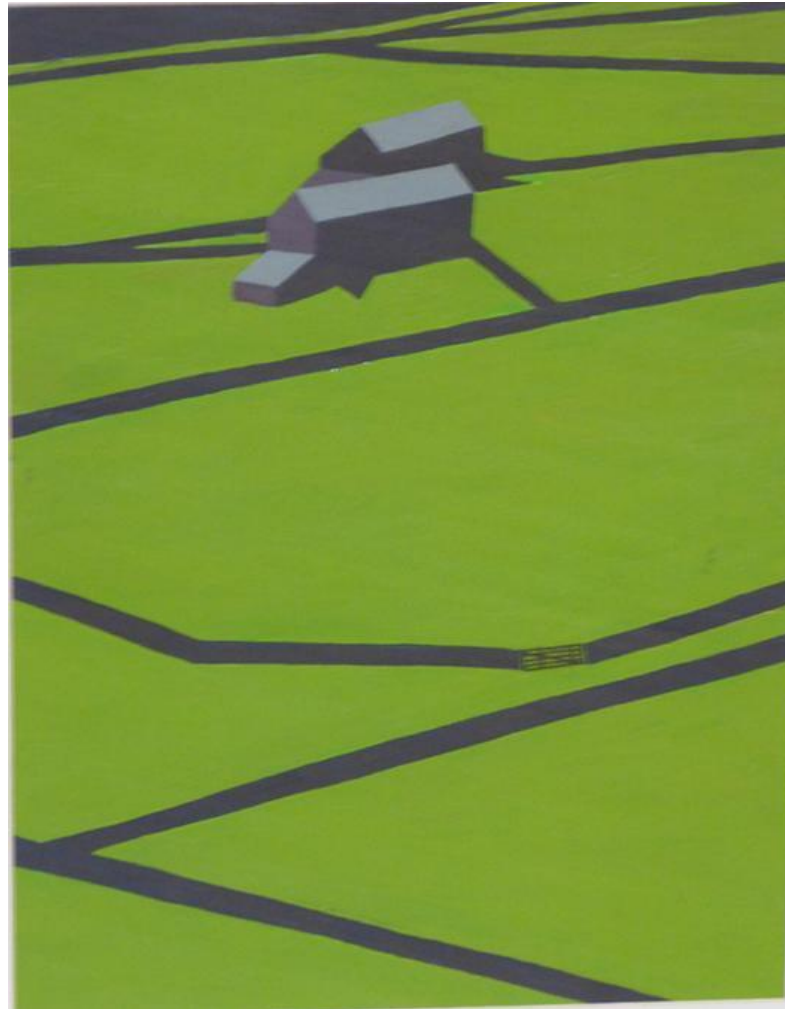
Garden Birds

25 x 20 cm ETCHING

Reserve  
£80

37.

Stephen Hill



Gunnerside Barns

38 x 29 cm Acrylic

Guide  
£50



38.

# Dinah Francis



Vixen

31 x 32 cm Watercolour

Guide  
£80

39.

John Hopkins



View from Bolton Castle

28 x 45 cm WATERCOLOUR

Reserve  
£80



40.

Judi Allinson



Summer Haze, Penhill with buttercups: Old Glebe field, Wensleydale

34.5 x 45 cm OIL

Reserve  
£150

41.

Flora McLachlen



Horses Bathing

8 x 8 cm ETCHING

Reserve  
£30



42.

## Fred Lawson



Donated by McTague of Harrogate

'Figures approaching a wood'

16 x 23 cm LINOCUT

Reserve  
£80

43.

## Richard Walls



Saltwick Bay, Whitby

40cm<sup>2</sup> MONOCHROME on aluminium



44.

## Richard Walls



Broken Ladder, Spurn Point

40cm<sup>2</sup> MONOCHROME on aluminium

45.

## Richard Walls



Frozen Swale

40cm<sup>2</sup> MONOCHROME on aluminium



46.

Jonathan Woolley

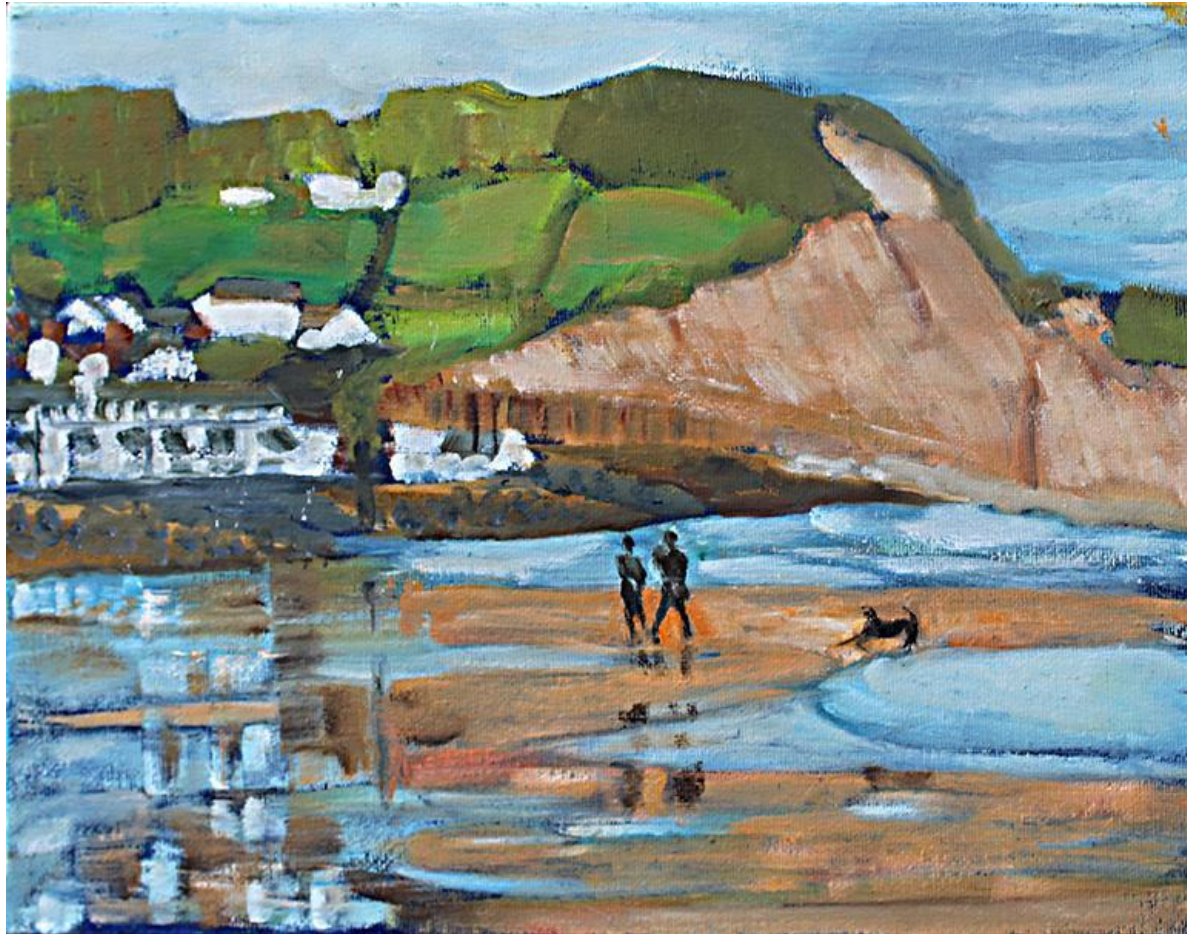


Boats at Collioure

45.5 x 61cm OIL

47.

Jonathan Woolley



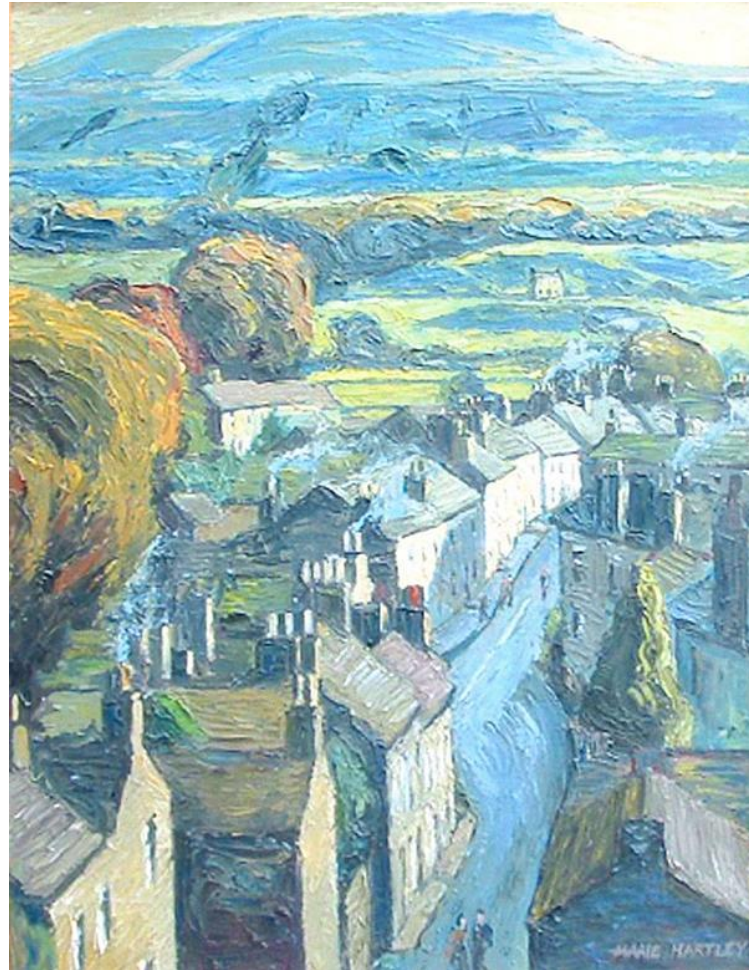
Sidmouth

23 x 30cm OIL



48.

Marie Hartley



Askrigg Village

91 x 66cm OIL

Reserve  
£250



49.

Denise Burden



Under the olive tree

25.5cm<sup>2</sup> LINOCUT

Reserve  
£120

50.

Denise Burden



The Cellist

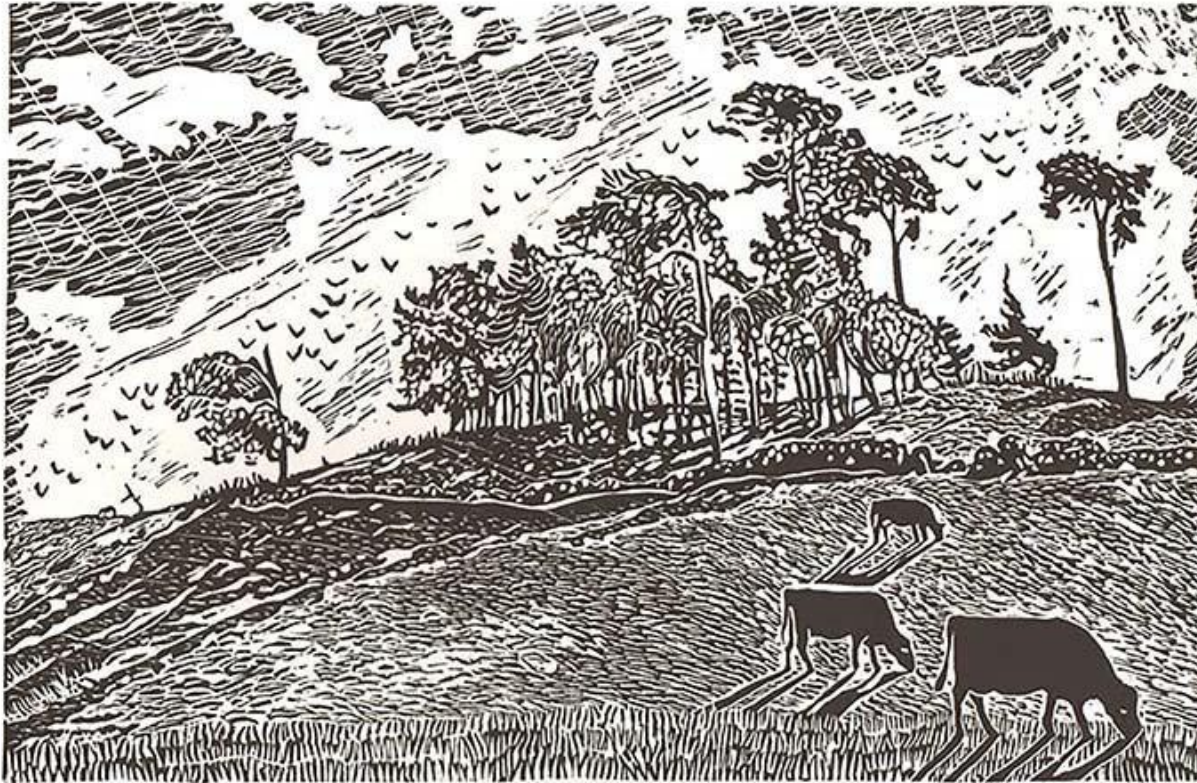
17 x 12 cm SCREENPRINT

Reserve  
£35



51.

## Denise Burden



Sun on their backs...Ladyhill, Wensleydale

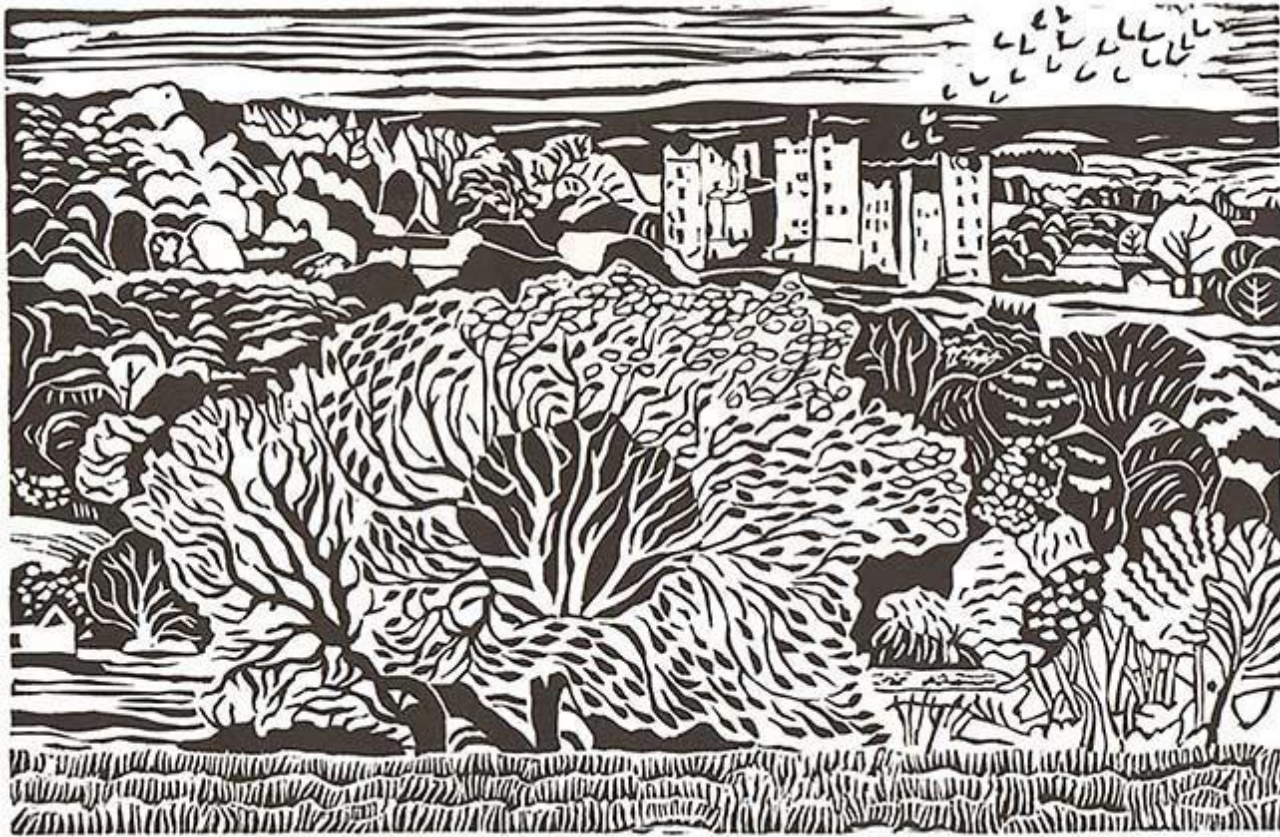
17 x 12 cm LINOCUT

Reserve  
£60



52.

## Denise Burden



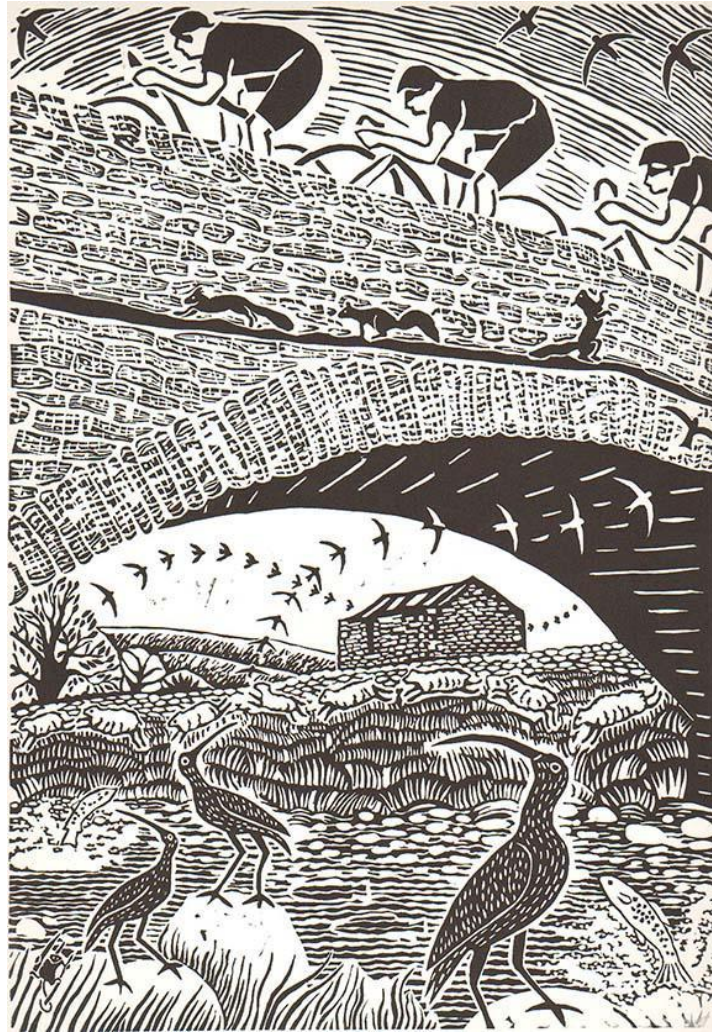
The Release...Bolton Castle, Wensleydale

18 x 27.5cm LINOCUT

Reserve  
£60

53.

# Denise Burden



Cycles in the Dales

39.5 x 27.5 cm LINOCUT

Reserve  
£140